

# Cambridge Sculpture Trails

CITY CENTRE



Included in these trails are 20th and 21st century sculptures that are accessible in public places throughout the central area of Cambridge city.

#### Please note:

- Many sculptures are located in college grounds where public access may be restricted in the pre-examination season, mid April – mid June. There are other occasions when colleges may be temporarily closed so it is advisable to telephone the Porters' Lodge prior to your visit.
- Group visits should be arranged with Colleges in advance.
- Dogs are not permitted in college grounds.
- Children must be accompanied by an adult.
- Collections change periodically. A number of sculptures are on loan so some works shown in the leaflet may not be in place.

For advice about places to stay and things to do visit [www.visitcambridge.org](http://www.visitcambridge.org)

## Cambridge Sculpture Trails

For more information please visit:  
[www.cambridgesculpturetrails.co.uk](http://www.cambridgesculpturetrails.co.uk)

E: [info@cambridgesculpturetrails.co.uk](mailto:info@cambridgesculpturetrails.co.uk)

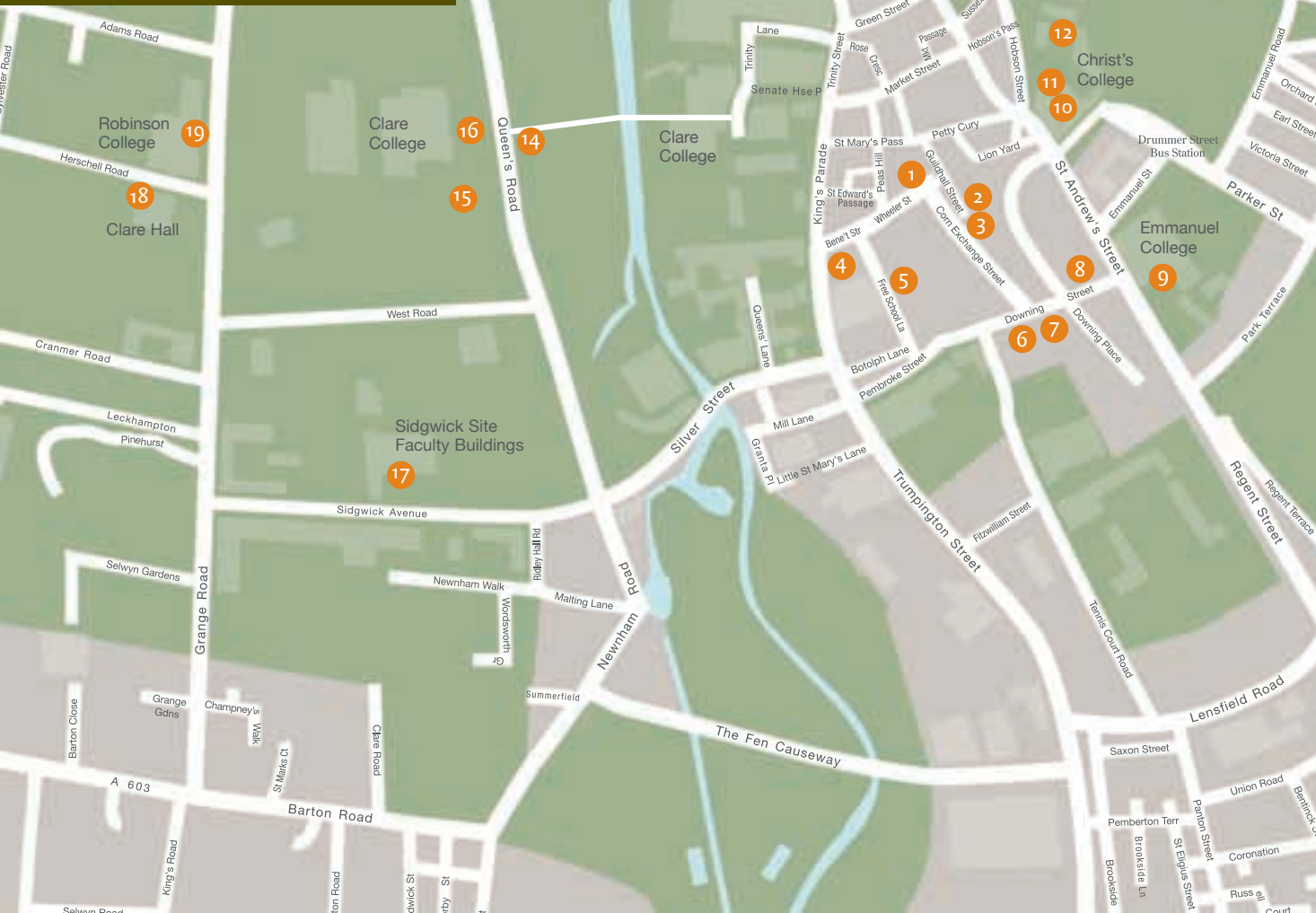
Design: [www.cantellday.co.uk](http://www.cantellday.co.uk)



LOTTERY FUNDED



### Finding your way....



## A new and exciting way to discover modern sculpture in Cambridge.

Three walking trails take you to outstanding pieces of sculpture sited in historic and modern Cambridge.

**Trail 1** South Cambridge

**Trail 2** City centre

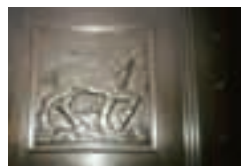
**Trail 3** West Cambridge

Each leaflet covers a different tour around the city centre. More information about the sculpture and the artists is available on our website [www.cambridgesculpturetrails.org](http://www.cambridgesculpturetrails.org)

**Trail 2** begins at the Tourist Information Centre, which is close to the centre of historic Cambridge. You will have the opportunity to view over thirty sculptures sited both in civic settings and university grounds from crocodiles, bears and bronze horses to works by sculptors such as Henry Moore, Wendy Taylor and Michael Ayrton.

Although it might take over four hours to complete, there are plenty of places for refreshments along the way.

Alternatively the walk can be completed on separate days or can be shortened by omitting sculptures 15-19 on the west side of the river. The collection in Jesus College (13) could be another visit.



**1: Lawrence Bradshaw**  
possibly influenced by  
**Gertrude Hermes**  
*Doors of the Guildhall* 1933  
Bronze

Market Square. Commissioned by C Cowles Voysey, the architect of the Guildhall. The ten panels on the doors depict scenes from rural life. Look out for the plinths on either side of the entrance which include seahorses which also feature in the Cambridge City coat of arms.



**2: Michael Ayrton**  
*Talos* 1950 | Bronze  
Guildhall Street.  
Talos is the legendary guardian of Minoan Crete. This sculpture was erected on the completion of the Lion Yard and Fisher House in 1973.

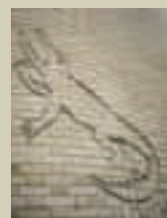


**3: Peter Randall-Page**  
*Between the Lines* 2007  
Carved from a granite glacial boulder  
Fisher Square, off Corn Exchange Street. A new piece outside the Grand Arcade.



**4: John Taylor & Mathew Lane Sanderson**  
*The Corpus Clock* 2008  
Gold plated stainless steel

On the corner of Bene't Street and King's Parade. This mechanical clock is driven by a mechanism in the shape of a giant grasshopper. The time is shown by blue LED lights moving round the clock face.



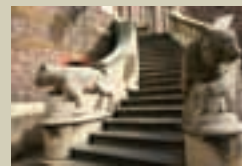
**5: Eric Gill**  
*Cavendish Crocodile* 1933  
Engraving on Brick

On the Mond Building. Visible through the Old Cavendish Arch, Free School Lane. "Crocodile" was the nickname of the eminent physicist Lord Rutherford who worked in the Cavendish Laboratory on this site.



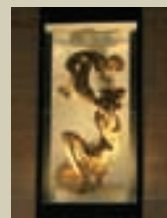
**6: Antony Gormley**  
*Earthbound: Plant* 2002  
Cast Iron

Situated at ground level in the entrance to the Downing Site, Downing Street, this installation is a human figure buried up side down with only the soles of the feet showing.



**7: Sculptor Unknown**  
*Bears* 1904  
Clipsham Stone

Sedgwick Museum of Earth Sciences, Downing Site, Downing Street. The Museum is to the left of the entrance from Downing Street and the bears are on the external stair rails. Look out also for bisons, an iguanodon, a sloth and a mammoth on the exterior of this building and stairway.



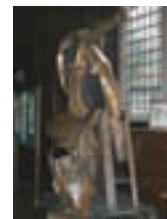
**8: Sophie Dickens**  
*Mother and Child* 2008  
Carved Wood

Situated at first floor level on the exterior of the John Lewis Building on the corner of Downing Street.



**9: Wendy Taylor**  
*Jester* 1994 | Bronze

Emmanuel College, St Andrew's Street. Sited in the Paddock Area. It is essential to enquire at Porters' Lodge: 01223 334200



**10: Antony Caro**  
*Deposition* 2000 | Rolled Steel  
Christ's College, St. Andrew's Street – sited in the ante-chapel. Inspired by Rembrandt's picture of the "Deposition from the Cross", this sculpture can only be seen when Christ's College Chapel is open to the public. It is essential to enquire at the Porters' Lodge: 01223 334900.



**11: Tim Harrisson**  
*A Pattern of Life* 2001  
Portland Limestone

Sited in the third court of the Christ's College. Visible from the path.



**12: Anthony Smith**  
*The Young Darwin* 2009 | Bronze

Situated in the Christ's College's Darwin Garden in New Court, this sculpture was commissioned for the 200th anniversary of the birth of Charles Darwin.



**13: Barry Flanagan**  
*Bronze Horse* 1983 | Bronze

Jesus College, Jesus Lane, First Court. Jesus College holds an impressive collection of other sculpture in the grounds including:

- Claire Barclay (*Glowing Promise* 2007)
- Antonio Bellotti (*Time's Arrow* 1996)
- Richard Bray (*Maple Three Piece* 1991)
- Geoffrey Clarke (*Call it Hadrian's Wall* 1970)
- Barry Flanagan (*The Cricketer* 1989)
- Evelyn Herring (*Mortal Man* 1960)
- Roger Hiorns (*Untitled* 2007)
- Phillip King (*Brake* 1966)
- Bryan Kneale (*Lucifer* 2006)
- Danny Lane (*Empress* 2001)
- Diane Maclean (*Spine* 1996)
- Eduardo Paolozzi (*Daedalus on Wheels* 1994)
- Keir Smith (*Coastal Path* 1986)
- William Turnbull (*Head* 1987)
- Alison Wilding (*Melancholia* 2003)

These outdoor sculptures can only be seen when Jesus College is open to the public. Enquire at the Porters' Lodge: 01223 339339



**14: Barbara Hepworth**  
*Divided Circle* 1969 | Bronze  
Clare College, Trinity Lane. This sculpture is sited in the Fellows' Garden and is not visible from elsewhere. Access to the garden is only possible when the college is open to the public. It is essential to enquire at the Porters' Lodge: 01223 333200



**15: Charles Jencks**  
*DNA Double Helix* 2005  
Aluminium

Clare College, Memorial Court Visible from Queen's Road. This sculpture was donated by Nobel Laureate Jim Watson to commemorate his discovery, together with Francis Crick, of the structure of DNA. Porters' Lodge: 01223 333200

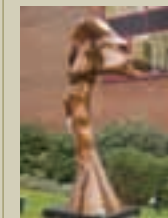


**16: Henry Moore**  
*Falling Warrior* 1956 | Bronze  
Clare College, Memorial Court. Porters' Lodge: 01223 333200



**17: Phillip King**  
*Span* 1967 | Painted Steel

Sidgwick Site Faculty Buildings, Sidgwick Avenue. An early work by the former President of the Royal Academy now on loan to the University.



**18: Helaine Blumenfeld**  
*Flame* 2004 | Patinated Bronze

Clare Hall (Entrance) Herschel Road. Within the College is an extensive collection of art which may be seen by appointment only. Contact Porters' Lodge: 01223 332360



**19: Ben Barrell**  
*Finback* 2008  
Bronze Resin on a steel base

Robinson College, Grange Road. This sculpture is visible from the entrance to the college. Two other sculptures by Philip de Konig and Christophe Gordon-Brown are in the garden. Porters' Lodge: 01223 339100